

SAFE LINK R10

Survivor Recovery System

The revolutionary new SafeLink R10 SRS (Survivor Recovery System) is the first of its kind, a personal AIS (Automatic Identification System) device to assist in Man Overboard recovery. It is lightweight and compact, designed for and intended to be carried by all crew members.

Provides accurate position information to assist fast recovery in a man overboard situation

Transmits GPS target tracking information to plotters and onboard navigation systems† to assist fast location and retrieval

Small and lightweight for mounting on lifejacket

Unique serialized ID

LED flashing indicator

Buzzer

Minimum 24 hour continuous operation

7 year battery life

† For use with AIS enabled plotters, contact your plotter manufacturer for further info.

Safelink R10 SRS SPECIFICATIONS

STANDARDS APPLIED	IEC 61097-14, 60945 (environmental/EMC), 61108 parts 1, ITU-R M.1371	Power	2W nominal
ENVIRONMENTAL		Transmit antenna	Sprung whip
Exterior finish	Hi impact ABS/PC Yellow	AIS messages transmitted	Message 1 (UID, GPS position, SOG, COG, UTC) Message 14 (SART-ACTIVE or SART TEST)
Sealing depth	Immersion to 5m (16.4ft)	Unique ID number	Factory programmed
Operating temperature	-20°C to +55°C (-4°F to +131°F)	GPS receiver	
Storage temperature	-30°C to +70°C (-22°F to +158°F)	GPS type	50 channel
BATTERY		Antenna type	Ceramic patch
Type	6V Lithium Metal	GPS position update	Every minute
Replacement	By service centre	PHYSICAL	
Use	Logged by microcontroller	Size (D x W x L)	13 x 46 x 120 mm (0.5" x 1.8" x 4.7")
OPERATION		Weight	120g (4.23 oz)
Activation	Manual two stage	Deployment	
Self test (short)	Battery use indication	Hands free	Webbing clip
		Hand held	
		Security	lanyard
GPS Self test (long) transmission with GPS position	SART TEST	FUNCTIONAL	
TRANSPORTATION		First transmission	After 10 seconds (no GPS)
Air cargo	UN 3091, not restricted	Range	4 nautical miles (typical)
Classification	Non-hazardous	Secondary location device and status indicator	Flashing white LED
ELECTRICAL		PART NUMBER	
AIS Transmitter		Safelink R10 SRS retail pack	K98-001-001A
Frequency	AIS channel 1- 161.975 MHz, AIS channel 2 - 162.025 MHz	Padded belt bag option	T.B.A

KANNAD marine



OCEAN SAFETY

Contact details:

Supplied by:

Ocean Safety Ltd
Lower York Street
Southampton
SO14 5QF
UK

Telephone : + 44(0)23 8072 0800

Fax : + 44(0)23 8072 0801

Email : info@oceansafety.com

Web : <http://www.oceansafety.com>

Please note that all information given in this brochure is intended to be useful and informative and is correct to the best of our knowledge at time of print. No liability can be accepted for inaccuracies or omissions. The right is reserved to amend this information without prior notice.

orolia
Positioning Navigation and Timing Group

ISSUE 1
February 2011

KANNAD marine

SAFE LINK R10 Survivor Recovery System



Your ultimate chance of retrieval

The SafeLink R10 SRS (Survivor Recovery System) is the first of its kind, a personal AIS (Automatic Identification System) device designed to be fitted to a lifejacket and assist in Man Overboard recovery. The SafeLink R10 SRS is specifically designed as a personal search and rescue locating device, it enables those on board a vessel with an AIS chart plotter† to quickly and efficiently locate and retrieve a missing crew member.



The SafeLink R10 transmits target survivor information, including structured alert messages, GPS position information and a unique serialised identity number back to the onboard plotter†. An inbuilt high precision GPS receiver provides accurate position information to assist in quick recovery of survivors.

The SafeLink R10 will transmit continuously for a minimum of 24 hours and has a 7 year battery storage life. It also features a flashing LED indicator light; to aid detection at night and a self test facility with battery use indication.

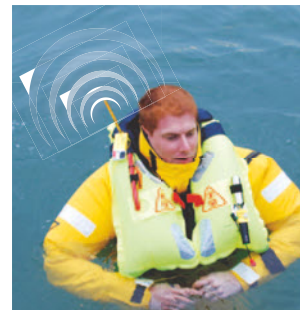
Carrying a SafeLink R10 is a must for every safety conscious sailor. Using this simple to operate, yet state of the art new device ensures the ultimate chance of retrieval in a Man Overboard situation.

Installation and Activation

The SafeLink R10 SRS must be mounted on a lifejacket using the attachment clips provided, prior to going to sea.

The R10 SRS can be manually activated in two easy steps. First, slide off the orange arming tab. This is normally left in place to avoid accidental activation. With the orange tab released, use this to pull off the red arming cap. This will deploy the antenna and automatically activate the R10 SRS.

If professionally* fitted to a lifejacket, the R10 SRS can become semi-automatic in operation; the action of the lifejacket inflating triggers the activation of the R10 SRS.



How SafeLink R10 SRS works

SafeLink R10 SRS must be mounted on a lifejacket using the attachment clips provided, prior to going to sea.

R10 SRS is activated manually in an emergency situation

A unique emergency alert is transmitted to all AIS receivers and AIS enabled chart plotters† within a 4 mile radius (typical)

An AIS SART emergency alert icon (pictured below) signals the requirement for urgent help in a Man Overboard situation

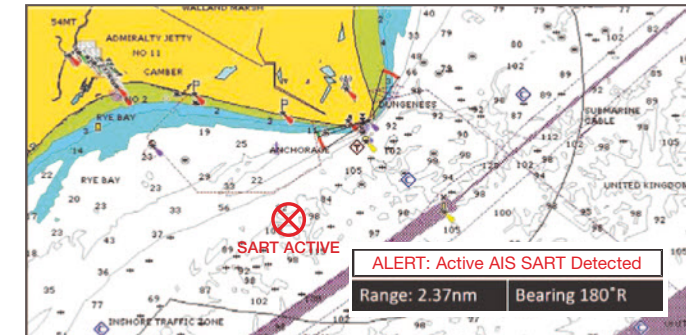


Chart data from Navionics
Dialogue box for illustration purposes only

Precise target survivor information including GPS position becomes viewable when the chart plotter† cursor is positioned over the emergency alert icon

Provides exact location, range and bearing to locate person(s) in need of assistance.

† For use with AIS enabled plotters, contact your plotter manufacturer for further info.
* Contact lifejacket manufacturer for further information

